



# **SIXTEENTH SESSION OF THE NORTH AFRICA CLIMATE OUTLOOK FORUM**

## **PRESANORD-16**

**SEASONAL FORECAST FOR DECEMBER-JANUARY-FEBRUARY  
2021/2022**

**Online session**

**December, 6<sup>th</sup> & 7<sup>th</sup> 2021**

# SEASONAL OUTLOOK FOR WINTER 2021/2022

Consensual seasonal forecast for boreal winter (December-January-February 2021) over the North Africa region has been produced during the sixteenth session of North Africa Climate Outlook Forum (PRESANOD-16) conducted online on December 6<sup>th</sup> and 7<sup>th</sup> 2021 in conjunction with the eight session of the Arab Climate Outlook Forum (ArabCOF-8) and the fifth session of the Gulf Cooperation Council Climate Outlook Forum (GCCCOF-5). It is based on known teleconnections of large and regional patterns as well as on dynamical and statistical model outputs.

## I. RECENT CLIMATE CONDITIONS AND OUTLOOK

Most of the key atmospheric and oceanic variables in the tropical Pacific indicate La Niña conditions. The majority of dynamical and statistical models indicate a 90% chance of ongoing La Niña conditions to continue during boreal winter<sup>1</sup>. Sea-surface temperatures are expected to be near normal over Tropical Atlantic Ocean and above normal over most of the Indian Ocean for DJF 2021/2022. The Indian Ocean Dipole index reflects near-neutral conditions and is predicted to continue being neutral for December 2021-February 2022<sup>2</sup>.

It is worth noting that seasonal forecast gives average tendencies for a season and in some cases sub-seasonal fluctuations can prevail.

## II. SEASONAL OUTLOOK

Given the current oceanic and atmospheric patterns, knowledge and understanding of seasonal climate variability and available long-range forecasts, the following seasonal outlook has been developed for DJF 2021/2022 across North Africa region.

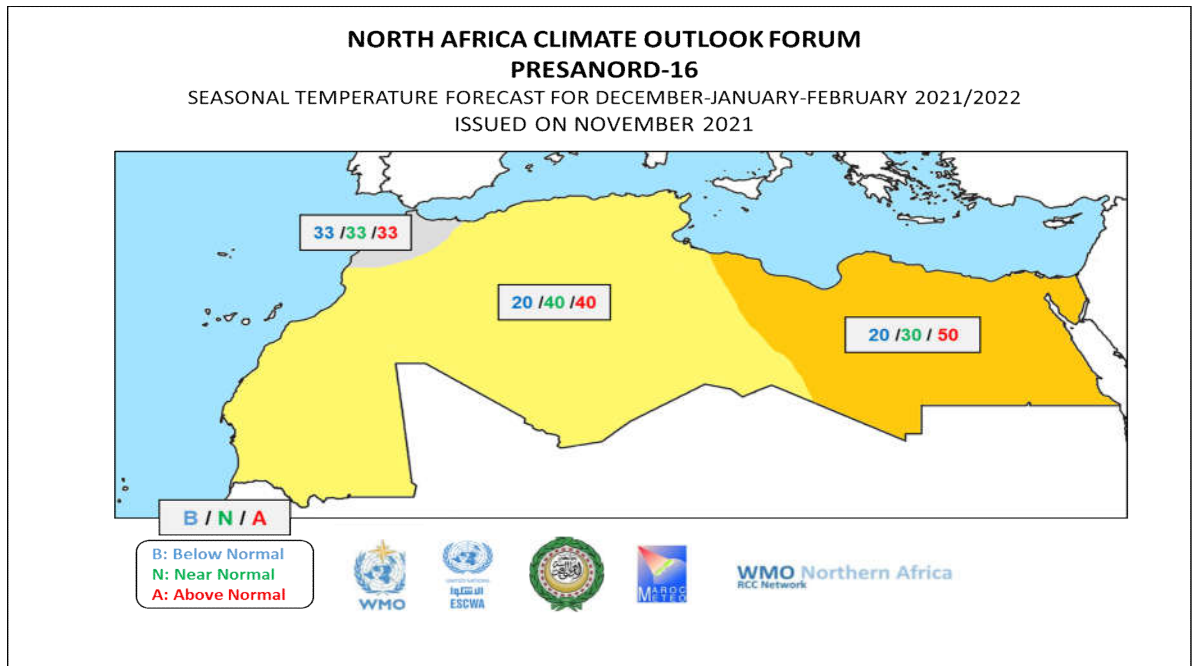
The maps show the probabilistic consensus forecast for 3 categories of anomalies for seasonal mean temperature and total precipitation.

---

<sup>1</sup> [WMO El Nino/La Niña Update](#)

<sup>2</sup> WMO Global Seasonal Climate Update DJF2021/2022

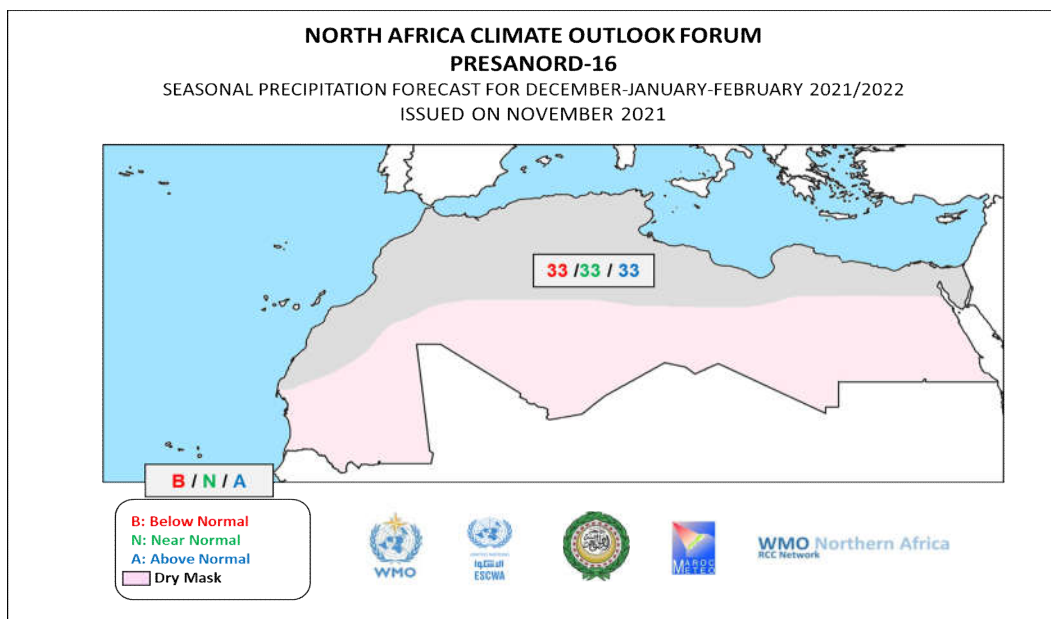
- **TEMPERATURE**



**Figure 1: Seasonal forecast of mean temperature for DJF 2021/2022**

During DJF 2021/2022, temperatures are likely to be above normal over almost all North Africa countries with a higher probability of warmer than normal conditions over Eastern Libya and Egypt (Fig.1). An equal chance between the three temperature categories (above normal, near normal and below normal) is given over Northwest of Morocco.

- **PRECIPITATION**



**Figure 2: Seasonal forecast of precipitation for DJF 2021/2022**

For DJF2021/2022, there is an equal chance between the three precipitation categories (above normal, near normal and below normal) over most of Morocco, Northern Algeria, Tunisia, Northern Libya and Northern Egypt. A dry mask is applied over the remaining area of North African countries (shaded pink) (Fig.2).